




OCTANE
ONE

OMG

TECH MANUAL



- 
- 4 WARNINGS AND IMPORTANT INFORMATION
 - 5 GENERAL RIDING INFORMATION
 - 6 FRAME INFORMATION
 - 6 TECHNICAL SHEET / SPECS
 - 7 GEOMETRY METRIC
 - 7 GEOMETRY IMPERIAL
 - 8 EXPLODED VIEW
 - 9 SPARE PARTS
 - 10 SPARE PARTS
 - 11 SUSPENSION SETTINGS
 - 11 REAR WHEEL MOUNTING
 - 11 FRAME SIZE RECOMMENDATIONS
 - 12 TIGHTENING TORQUE
 - 13 MAINTENANCE & PERIODICAL SAFETY CHECKS
 - 14 DCATNE ONE WARRANTY
 - 15 PROOF OF PURCHASE - WARRANTY CARD

WARNINGS AND IMPORTANT INFORMATION

ATTENTION: Please read this manual carefully. It contains important safety information!

WARNING: Extreme riding is a very dangerous sport; it requires an amazing amount of skill. By engaging in this type of activity, you are accepting the risk of possible injury or even death. Even the best bike will not help you land a clean trick if you lack the skills. Even the best protective gear will not guarantee complete safety. Remember that in this kind of riding, you can only trust your own abilities and you must accept the inherent risk. While riding you can reach significant speeds and therefore face significant hazards and risks. Inspect your bicycle and equipment carefully and be sure that it is in perfect condition before each ride. If possible consult with area site personnel, expert riders and race officials on conditions and equipment advisable. Always wear appropriate safety gear, including an approved full face helmet, full finger gloves, body armour, bright, visible clothing that is not so loose that it can be tangled in the bicycle or objects at the side of the road or trail, shoes that will stay on your feet and will grip the pedals (make sure that shoe laces cannot get into moving parts, and never ride barefoot or in sandals). Always use protective eyewear, to protect against dirt, dust and bugs.

WARNING: Some of the service procedures require specialist tools and good mechanical skills. Therefore, to minimize the risk of serious or even fatal accidents, maintenance and assembly work on your bike should be carried out by an authorized bicycle workshop.

IMPORTANT NOTICE: This manual is not intended as a comprehensive use, service, repair or maintenance manual. Please consult your dealer for advice and your dealer may also be able to refer you to classes, clinics or books on bicycle use, service, repair or maintenance.

WARNING: The frame box contains instructions for components made by third parties. You must study these carefully and follow the directions before riding your bike. Make sure you read and follow the suspension set up and service instruction manual provided by the manufacturer. If the instruction manual has not been provided, please contact your dealer or the manufacturer.

WARNING: Failure to maintain, check and properly adjust the suspension system may cause suspension malfunction, in result of which you may lose control and fall.

WARNING: Introducing changes in the suspension adjustment can alter the handling and braking characteristics of your bicycle. It is forbidden to change the suspension adjustment unless you are thoroughly familiar with the suspension system manufacturer's instructions and recommendations; you should always check for changes in the handling and braking characteristics of the bicycle after the suspension has been adjusted by taking a careful test ride in a safe area.

WARNING: As with all mechanical components, the frame is subjected to wear and high stresses. Different materials and components may react to wear or stress fatigue in different ways. If the design life of a component has been exceeded, it may suddenly fail possibly causing injuries to rider. Any form of crack, scratches or change of colour in highly stressed areas indicate that the life of the component has been reached and it should be replaced.

GENERAL RIDING INFORMATION

Riding a bicycle can be dangerous. You must keep this in mind and be cautious at all times.

See and be seen. Use lights and reflective clothing in low light conditions.

Always wear a helmet when riding. It can save your life.

Always conduct a pre-ride check (detailed information can be found further in this manual).

Never ride the bicycle if you observe any technical problems or have any doubts about the proper functioning of any elements in the bicycle.

Keep the bike clean and well maintained.

Carry a pump, spare inner tube, patch kit, and a basic tool kit - you may need this in the case of a flat tire or other common mechanical problem that is usually easy to fix if you have the right tools. Ask your dealer for advice on this issue.

If your bicycle is equipped with gears, you can choose a gear combination that is most comfortable for the riding conditions. Gears will allow you to maintain a constant rate of pedaling. Use lower gears for going uphill and higher gears for going downhill. Ease up on your pedaling pressure when you shift gears. Ask your dealer to give you more advice on this issue.

Be careful with the brakes - they can be powerful and if activated too aggressively, may cause a crash. You should spend some time to get a better feel of the brakes on a side road or empty parking lot before the first ride. Avoid riding too fast, especially downhill. It is easy to lose control of the bicycle and crash at high speeds, and also you will find it very difficult to slow down especially if the hill is steep.

If your bike has been equipped with suspension, the increased speed you may develop will also increase the risk of injury. For example, front of the bike may dive on the suspension fork while hard braking. You can easily lose control and fall if you are not prepared for this. Please, learn how to operate your suspension system safely.

Thanks to the suspension the wheels can follow the terrain better, which improves control and comfort. This improved capacity may provide opportunity for riding faster, but you should be careful not to mistake the enhanced capabilities of the bicycle for your own riding skills. Improving skills takes time and practice.

Protect your bike from theft. Purchase a lock and never leave your bike unlocked while unattended, even if you are planning to be away from it for just a few minutes.

FRAME INFORMATION

The first full suspension frame from Octane One. The perfectly balanced trail slayer with 130mm travel in the back, suited for 140-150 mm travel fork and 29"/27+ wheels. Progressive geometry let the rider fly on descents and take comfortable position on uphill. Designed especially for air shocks, the OMG's suspension has got very good kinematics - it's sensitive in all the travel range but doesn't bottom out easily. The horst link design stiffens up the suspension under pedalling, preventing annoying bobbing and squatting, even without use of shock lockout. OMG is known for its versatility with multiple applications, from recently hyped downcountry to aggressive trail riding.

TECHNICAL SHEET / SPECS

rear wheel travel: 130mm

recommended fork travel: 140-150mm

frame material: AL6061-T6 + AL6066-T6

rear shock: 200x50mm

mounting hardware: 10X20(shaft) / 10X25(body)

cable routing: semi-internal

head tube: tapered 1.5 ZS44/ZS56

headtube length: S : 110mm, M : 120mm, L: 130mm

fits forks with standard 1-1/8" or tapered 1.5 - 1-1/8"

hub spacing: 148 x 12mm, O1 axle included

post-mount direct 160mm disc brake mount,

max rotor size: up to 200mm

BB: BSA 73mm

biggest chainring: up to ~34t

rear derailleur: removable hanger included

seat post / clamp: 31.6mm / 34.9 (clamp included)

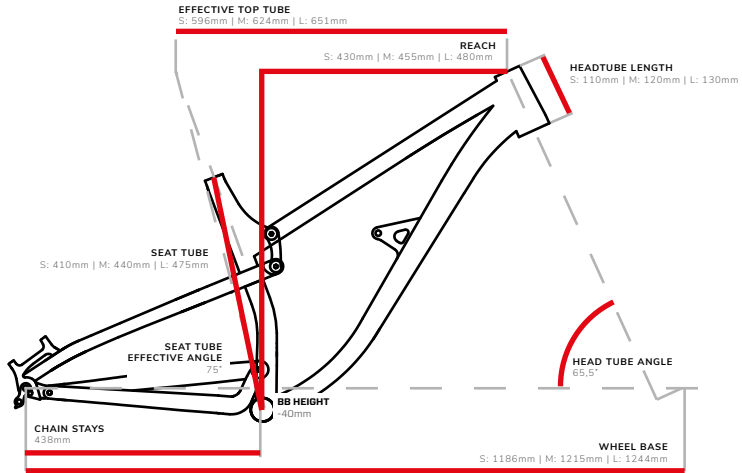
stealth cable route in seat tube for dropper post

maximum tire size recommended: 29" x 2.4",

(depends on tire manufacturer)

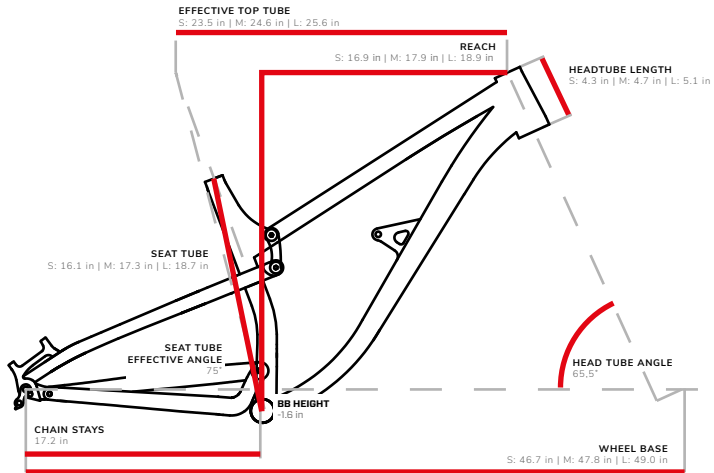
GEOMETRY METRIC

based on fork travel 140mm

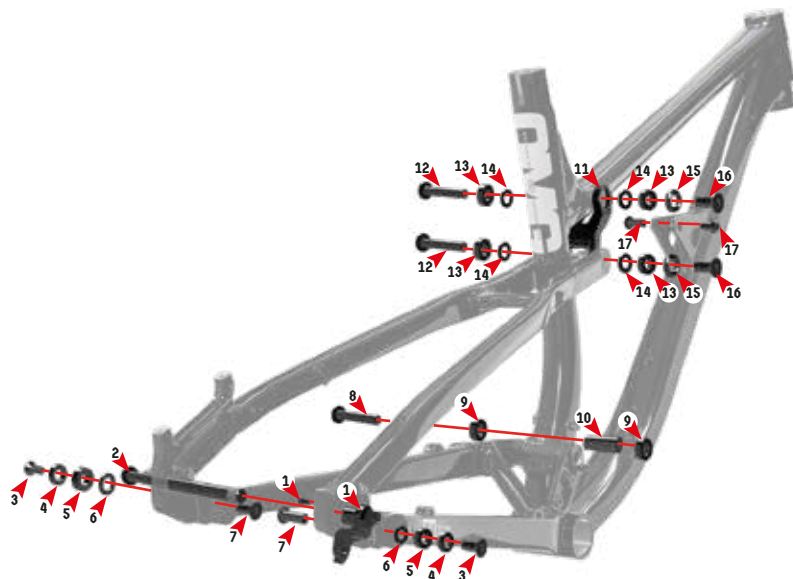


GEOMETRY IMPERIAL

based on fork travel 140mm



EXPLODED VIEW



NR	PART	CODE
----	------	------

1	Hanger + bolt	SP-185
2	Axle 171 12mm	SP-210
3	Horst link bolt	SP-217
4	Horst link spacer	SP-217
5	Horst bearing	SP-213
6	Horst link spacer	SP-217
7	Horst link nut	SP-217
8	Main pivot axle	SP-215
9	Main bearing	SP-213

NR	PART	CODE
----	------	------

10	Main pivot spacer	SP-215
11	Rocker arm	SP-218
12	Rocker bolt	SP-214
13	Rocker bearing	SP-213
14	Rocker spacer	SP-214
15	Rocker bolt spacer	SP-214
16	Rocker bolt	SP-214
17	Shock bolt	SP-216

SPARE PARTS KIDS



NR	KIT	CODE
1	Bearing kit	SP-213

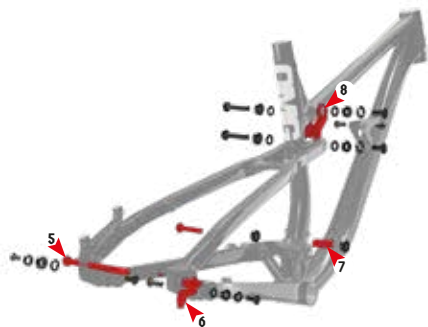


NR	KIT	CODE
2	Horst link bolts kit	SP-217
3	Shock bolt	SP-216

SPARE PARTS KIDS



NR	KIT	CODE
4	Rocker link bolts & nuts	SP-214



NR	KIT	CODE
5	Axle 171 12mm	SP-210
6	Hanger + bolt	SP-185
7	Main pivot link bolt	SP-215
8	Rocker arm	SP-218

SUSPENSION SETTINGS

Suspension settings are a matter of personal preference. Some riders like it plush, some like it firm. However here are some suggestions of shock settings that you can use as basic guidelines.

Typically, the OMG should run with about 20% to 30% sag. To measure sag, push the bottom-out bumper up the shock shaft until it meets the body of the shock. Gently stand up on the pedals with all your weight on the bike (fully kitted up with body armour, helmet, neck brace, hydration pack, etc. – it's important to make the situation as 'real world' as possible to give you the most accurate results) and note how far the bumper displaces

REAR WHEEL MOUNTING INSTRUCTION

The OMG frame is compatible with 148x12 thru-axle hubs. For proper rear wheel installation please follow the instructions:

- make sure the wheel is aligned and the disc sits properly in the brake caliper
- put the wheel into the dropouts with the chain set up correctly on a cassette
- put the 12mm axle through and tighten properly with 6mm allen key

FRAME SIZE RECOMMENDATIONS

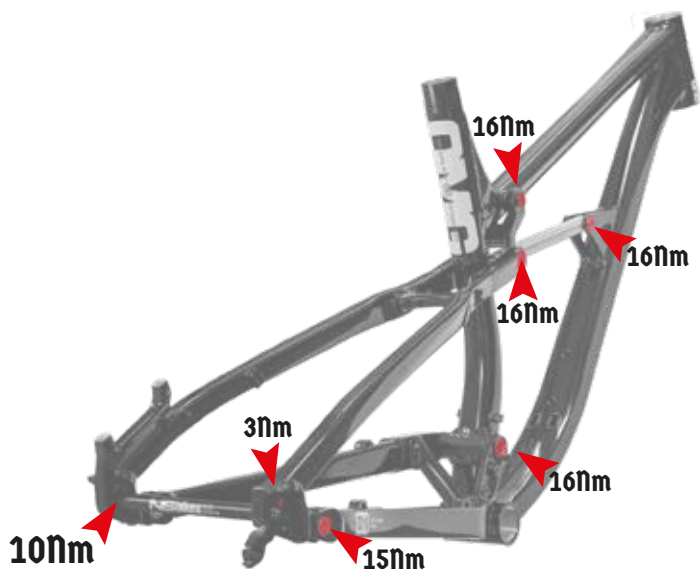
note on sizing: we recommend the S size for 160 - 170cm, M size for 170 – 182cm and the L size for riders over 180cm.

TIGHTENING TORQUE

Correct tightening forces on fasteners, nuts, bolts, screws on your bicycle are crucial. Too little force, and the fastener may not hold securely. Too much force, and the fastener can strip threads, stretch, deform or break. Either way, incorrect tightening force can result in component failure, which can cause you to lose control and fall. If in any doubt, or if any problems are found during the pre-ride check you should immediately seek professional advice from a professional bicycle mechanic.

Study the manuals of the suppliers of the suspension fork, rear shock, and other parts that come with this frame. Do not ride the bicycle until all problems have been resolved. Riding a bicycle with any defects can be a hazard to your health and life! Unless you are a very competent bicycle mechanic, do not attempt to execute any of these adjustments yourself. Seek advice at your local bicycle shop. The rear suspension bolts (rear shock and pivots) have been tightened in the factory with specific torque. In case of re-adjustment extreme care should be taken when re-tightening them.

Tightening torque for various bolts on the frame:



MAINTENANCE & PERIODICAL SAFETY CHECKS

DO NOT RIDE THE BICYCLE IF IT YOU SEE ANY DEFECTS.

Take care of your frame and you will enjoy it for a longer time. Before every ride you should always make a pre-ride check. It should include the following points: clean the frame (note that high-pressure washing may cause damage to some components on the bicycle so it should be avoided if possible) and examine it CAREFULLY for any indications of potential failures including cracks, corrosion, dents, paint peeling and any other indications of potential problems, inappropriate use or abuse. If anything suspicious is found, contact your local bike dealer for a proper inspection. These are important safety checks and very important to help prevent accidents, injury and shortened product lifespan.

Things to check before each ride:

- all frame bolts are correctly tightened – refer to # TIGHTENING TORQUE
- wheel to frame & fork connections - this is critical for your safety. If you have axle bolts they should be tightened according to the manufacturer's specification. If you have a quick release make sure that it is set to the CLOSED position, and that there is a reasonable amount of resistance applied.
- steering system. The steering system includes: handle bar, stem, headset and fork. All elements should be connected firmly for riding safety. If you wish to make any adjustments yourself, be warned that incorrect setup can be very dangerous and we always advise you to seek professional advice for this! Check headset looseness, check stem to handlebar connection and stem to steertube connection. Check the connection between the handlebars and stem. Try pushing the handlebars up and down - there should be no movement between these two elements. Check the headset for eventual free play (stand next to the bicycle, apply the front brake and push forwards and backwards. There should be no play between the frame and fork). If any play is found contact your local bike shop. Do not attempt to make any adjustments yourself. If you are confident that you can do this yourself then adjust the steering system according to the headset/stem manufacturer instructions. All parts of the stem should be regularly checked for damage or cracks. If you find anything suspicious, contact an experienced bike mechanic immediately. A defective steering system can cause serious injury or death.
- bottom bracket connection to the frame. There should be no play between the frame and bottom bracket.
- the connection between the cranks and bottom bracket.
- the connection of the pedals to the cranks.
- chain line and chain tension.
- derailleur connection with the frame and make sure the function is proper before every ride.
- brake clamp to frame & fork connection.
- the general condition of rear shock and front fork (take special note of any cracks or deformations).
- shock / fork pressure (for air shocks). Refer to the # SUSPENSION SETTINGS and manufacturers instruction. Make sure the SAG doesn't exceed the reasonable limit. Make sure the air pressure does not exceed limits provided by shock / fork manufacturer
- clean rear shock & forks stanchion tubes.
- brake cables and their housing for kinks, rust, broken strands or frayed ends. If you notice any damage, you should ask a bicycle shop to replace the cables immediately. Damaged cables can seriously impede braking efficiency.

For information about servicing the shock and other parts like the headset mounted on the bike it is necessary to follow manufacturers instructions closely. The user manual for the additional parts are supplied in the frame box.

OCTANE ONE WARRANTY

1. 7ANNA sp. z o.o. sp. k. (hereinafter on referred to as 7ANNA), manufacturer of Octane One, warrants all new full suspension frames for a period of 3 years.
2. If any defects are noticed in the product, the Customer must stop using it immediately and should report this to the dealer that sold it within 14 days. Using a damaged product will void the warranty, lead to more extensive damage and may pose a serious hazard to the rider's health and life.
3. The warranty period starts from the day when the product is purchased. This purchase must be documented with the cash receipt for all products plus a filled in warranty card for frames (which includes the following information: date of purchase, serial number of frame, customers name and name of dealer).
4. The warranty applies only to the original owner and is not transferable.
5. Claims under this warranty should be made through the dealer where the product was purchased.
6. The warranty is valid only if the component is sold by an authorized dealer and assembled by a qualified bicycle mechanic.
7. The warranty does not cover:
 - normal wear and tear
 - bearings
 - labour charges for replacing parts,
 - paint and decals,
 - problems that result from excessive loads occurring during extreme riding or from bad riding technique,
 - problems that result from incorrect assembly or installation.
 - cost of travel or shipment to and from an authorized dealer such cost, if any, shall be borne by the original owner
8. This warranty is void if:
 - the warranty card is filled in incorrectly or incompletely,
 - any modifications have been made to the product by the customer,
 - damage has been caused by external parts that have been incorrectly assembled on the frame,
 - the product had not been used, maintained or repaired according the manufacturers instructions,
 - the product was transferred to any third party.
9. Directions on how to deal with warranty cases shall be provided by the distributor of the product in the region where it was purchased.
10. The crash replacement warranty covers damage resulting from crashing, or excessive loads generated by things like casing jumps or throwing the bike. Such damage won't be covered by the normal warranty, however 7ANNA offers the possibility to replace the product for 50% of the original suggested retail price under the Crash Replacement policy.
The conditions for this are:
 - Crash Replacement applies to NS full suspension frames for a period of 3 years from the date of purchase.
 - 7ANNA reserves the right to deny Crash Replacement without further explanations,
 - Crash Replacement does not apply to parts damaged in other situations than in riding (for example Crash Replacement will not cover a part that has been damaged during shipping),
 - Crash Replacement only applies to components made by 7ANNA.
11. This limited warranty does provide the original owner with certain legal rights and recourse and the original owner may possess other rights or recourse, depending on the state, jurisdiction, country, or province. Please be informed that this is a final statement of the 7ANNA and all the remedies available to the original owner are stated herein. 7ANNA does not allow or authorise any entity (including authorised dealers) to extend any other express or implied warranties on its behalf. An original owner agrees that 7ANNA's liability under this warranty under no circumstances shall be greater than the original purchase price. In no event shall 7ANNA be liable for incidental or consequential damages. All other remedies, obligations, liabilities, rights, warranties, express or implied, arising from law or otherwise, including (but not limited to) any claimed implied warranty of merchantability, any claimed implied warranty arising from course of performance, course of dealing or usage of trade, and any claimed implied warranty of fitness, are disclaimed by 7ANNA and waived by the original owner. Some states, jurisdictions, countries, and provinces do not allow some or all of the limitations set forth herein, or the exclusion or limitation of incidental or consequential damages. If any provision is found unenforceable, only that provision shall be stricken and all others shall apply

PROOF OF PURCHASE - WARRANTY CARD

FRAME MODEL: _____

FRAME SERIAL NUMBER: _____

SHOCK SERIAL NUMBER (IF ANY): _____

PRICE: _____

DATE OF PURCHASE: _____

I certify that I am acquainted with the actual specification of the bicycle (this can be slightly different than that published by the distributor)

BUYER'S SIGNATURE: _____

DEALER'S SIGNATURE: _____



DEALER'S STAMP

manufactured by: 7anna sp. z o.o. sp. k., ul. Potokowa 20d, 80-283 Gdańsk, POLAND
tel +48 520 18 04

Always wear a helmet when riding. It will not make you deathproof, but will increase your chances to avoid serious injury if you crash (and you WILL crash). A broken leg can be fixed. A broken brain cannot! Even if you see some of our riders without a helmet, it's only because they are complete idiots!



WWW.OCTANE-ONE.COM
INFO@OCTANE-ONE.COM